

DANE COUNTY JUVENILE COURT



ANNUAL REPORT 2025

DANE COUNTY JUVENILE COURT PROGRAM

TABLE OF CONTENTS

JUVENILE COURT PROGRAM

Pages 1-2

JUVENILE RECEPTION CENTER

Pages 3-20

JUVENILE DETENTION CENTER

Pages 21-27

JUVENILE COURT SANCTIONS

Pages 28

JUVENILE SHELTER HOME

Pages 29-33

HOME DETENTION PROGRAM

Pages 34-36

DANE COUNTY CASA

Page 37

CHILD PROTECTIVE SERVICES

Page 38-42

JUVENILE COURT REFERRALS AND PETITIONS FILED

Pages 43-44

CLOSING

Page 45

JUVENILE COURT PROGRAM

The **Juvenile Court Program** began under the Circuit Court in 1970. The Program was initially funded through the Wisconsin Council of Criminal Justice grants and matching county funds. The **Juvenile Reception Center, Juvenile Detention Center** and **Juvenile Shelter Home** were placed under the direction of the Juvenile Court Administrator in 1972. The **Home Detention Program** was initially funded in 1974 and the **Youth Restitution Program (YRP)** began in 1978 (The YRP contract was transferred to the Human Services budget in 2008). Many changes have occurred to each program throughout the years and each has continually re-evaluated its mode of operation in order to fit the changing needs of the community. Following is a detailed description of each program in the department.

Administration and Reception Center:

The Juvenile Reception Center (JRC) is the point of referral for youth alleged to have committed a law violation for which the apprehending law enforcement officer is unable to release the youth to a parent, guardian, or other responsible adult and/or believes the youth should be referred for a custody decision. JRC then conducts an intake and makes a temporary physical custody decision. JRC also provides a number of other services related to the physical custody of the youth and coordinating information with the courts, human services, and law enforcement. JRC is staffed with at least one Juvenile Court Counselor 24 hours a day.

Juvenile Detention Center:

The Juvenile Detention Center's mission is to provide a safe and secure environment, both physically and emotionally, for youth placed temporarily by the court and to provide them with the opportunity to learn new skills that will enable them to contribute to the community when they leave. The Detention Center has a capacity of 30 residents and is located on the 2nd floor of the City-County Building in downtown Madison, WI. Youth are held in Detention primarily because either there is reason to believe that if released, they would cause harm to other persons or they would be unavailable for further court proceedings, and/or they have been found to be in violation of a valid court order and rules of supervision. The program operates 24 hours a day.

The Shelter Home:

The Shelter Home (SH) provides non-secure (unlocked) residential services for youth who need a place to stay pending further court action but for whom placement in a secure setting (Detention) is not necessary. The Shelter Home provides for placement of a total of 16 boys and girls who are involved in the delinquency or CHIPS systems and is located at 2402 Atwood Ave in Madison, WI. Youth may stay at the Shelter Home for up to 60 days. The program operates 24 hours day.

Home Detention Program:

The Home Detention Program (HDP) is an alternative to detention or non-secure placement of youth. There is no time limit and the length of their involvement will depend on the court status of the youth. Juvenile Court Workers assist the parent(s) in providing adequate supervision and monitoring of youth. This program:

- Reduces the need for the placement of youth in detention or non-secure placements pending court disposition.
- Assists both the parents and youth in resolving conflicts that might otherwise lead to further problem behavior.
- Provides information to the court about the ability of the youth and family to maintain a safe and supervised plan that would enable the youth to remain at home at the time of court disposition.
- Provides a “bridge” between the court disposition and the implementation of longer-term supervision through the Neighborhood Intervention Program (NIP) or Youth Services of Southern WI by providing supervision to help maintain the situation at home until one of those programs can begin intensive supervision services.

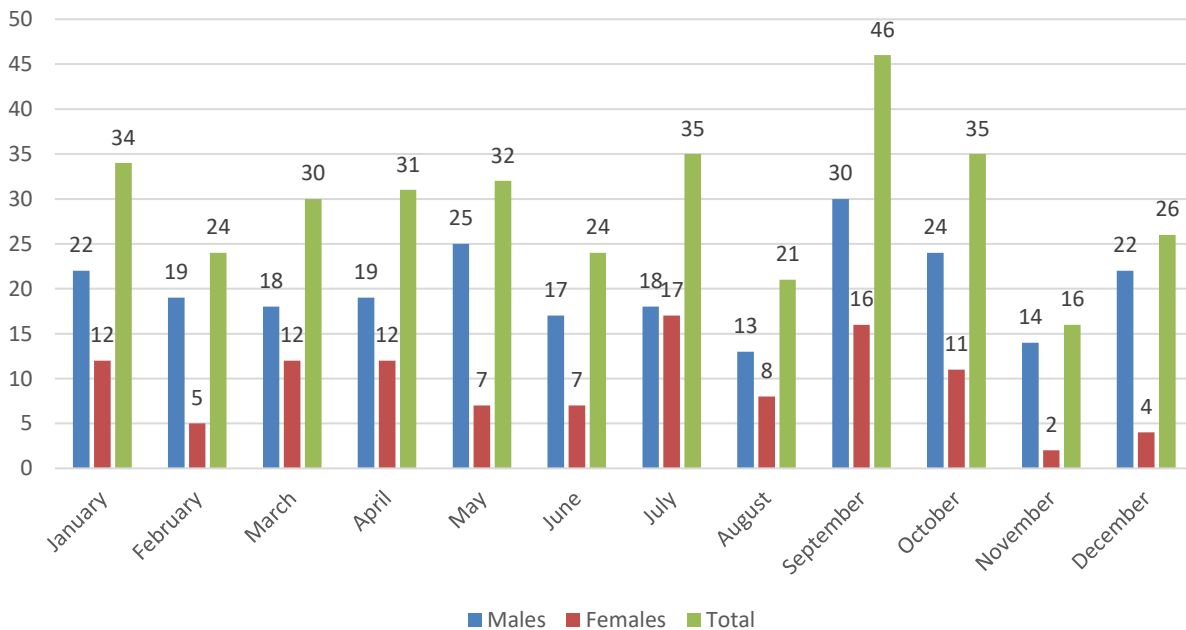
This report seeks to compile information obtained from the above-named programs and other sources into a single resource. The goal is to share what is known, statistically speaking, about those who were involved with the Juvenile Court Program last year.

The Juvenile Court Program has a proud history of providing the Dane County community with the greatest possible degree of professionalism and confidentiality. The supervisors and staff of the programs work hard to maintain a safe environment for the youth and families they serve. The Annual Report is one of the tools that the department uses to convey information to the partners involved with the Juvenile Court Program and is used to monitor their own performance.

Juvenile Reception Center

The Juvenile Reception Center is Dane County’s point of referral for youth alleged to have committed a delinquent act and are not released directly to a parent, guardian, relative, or other responsible adult by law enforcement. The Juvenile Reception Center also provides a number of other services pertaining to the physical custody of youth, including the coordination of information with the courts, human services, and law enforcement.

**Referrals Per Month
Chart 1**

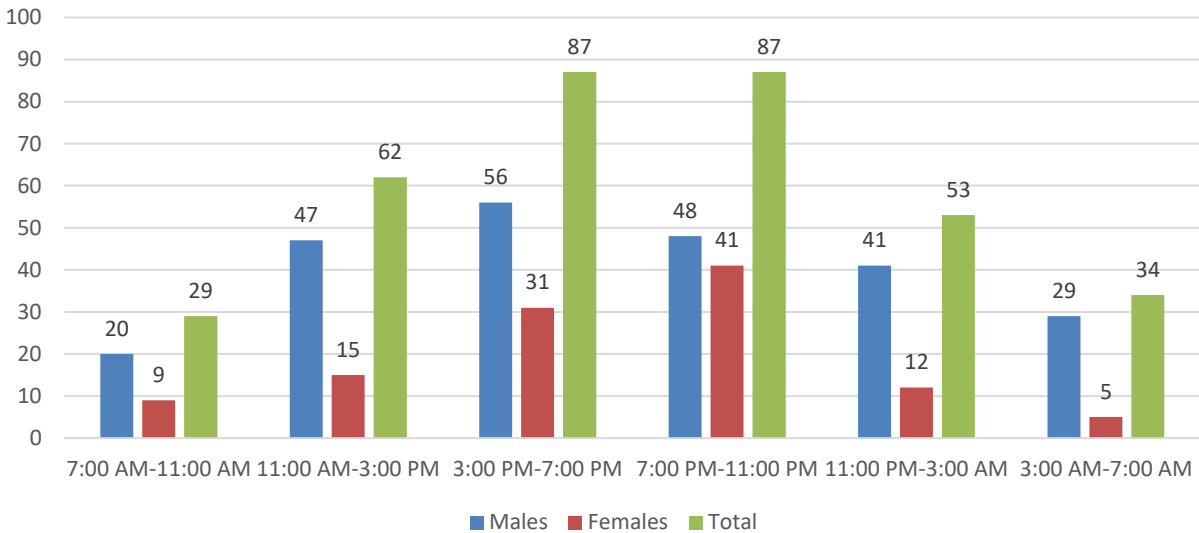


A total of 354 youths (241 males and 113 females) between the ages of 10 and 17 were referred to JRC for intake in 2025, which is slightly fewer than the 361 referrals in 2024. September was the busiest month for intakes in 2025. Historically, there is a spike in referrals in the fall that coincides with the start of the school year.

Time of Referral

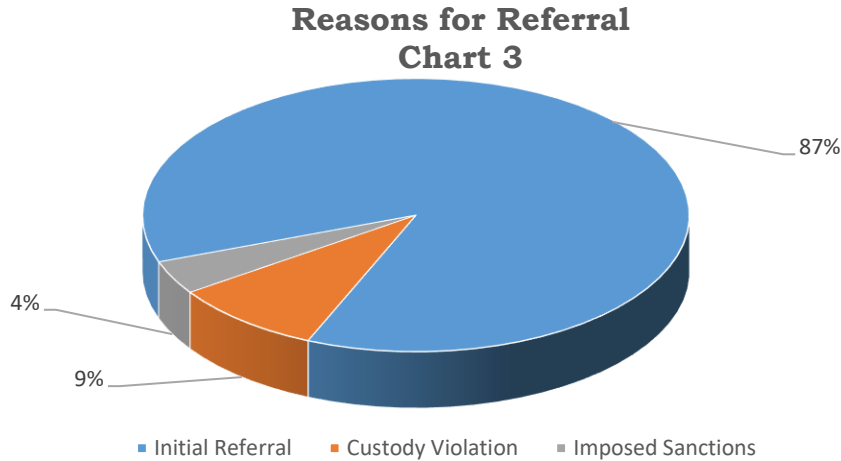
The Juvenile Reception Center records the time of referral for each youth referred. The time of referral provides an important look into the number of intake decisions that occur outside of “normal” business hours of other county and private agencies. That knowledge may help inform other agencies of ways they could help the Department gather information for intake. It also provides insight to the Department about the number of staff that will likely be needed each day and what resources that staff is likely to have readily available at the time of intake.

Referrals Per Time Period
Chart 2



Juvenile Reception Center Counselors are involved in a variety of other court related duties that are not reflected by the number of initial intakes completed each year. Counselors are responsible for participating in court-related duties and they have frequent contact with the Dane County Department of Human Services as well as other local, county, and state service providers. This case management and interaction helps ensure the coordination of services for youth held in secure custody.

Reasons for Referral to JRC



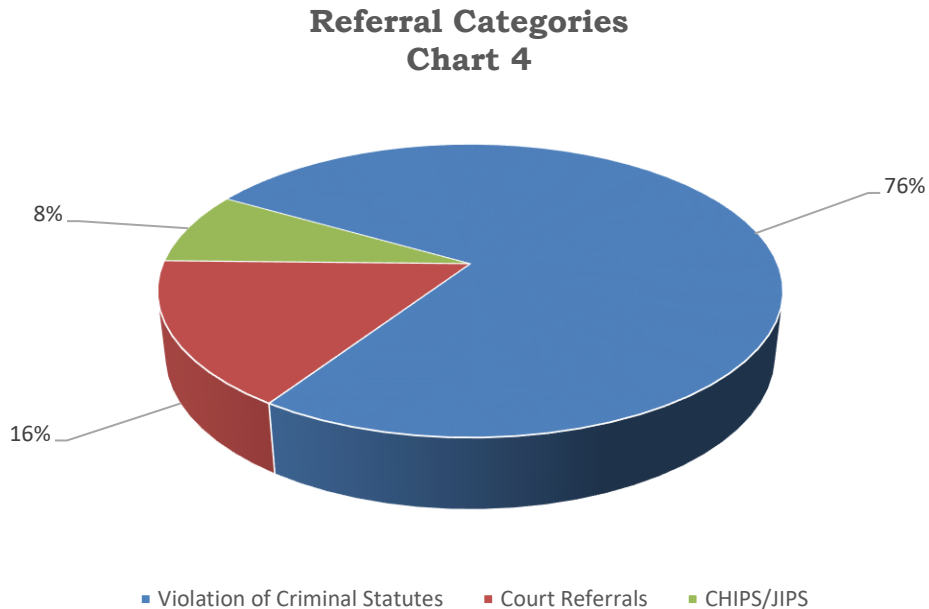
In addition to the 354 youths who were referred to JRC in 2025, 36 youth under an existing custody order were re-referred for violations of a current custody order for a total of 390 referrals. Chart three above provides a percentile breakdown of three categories by which youth were referred. Eighty-seven percent of the youth were referred for an initial intake. This number includes youth referred pursuant to a Court Order, a Warrant, a Capias, and/or for a new delinquency. It also includes direct placements at Shelter Home or with the Home Detention Program. Nine percent of the referrals were for allegedly violating the terms of an existing custody order. Thirty-four of the 36 re-referred youth violated a nonsecure custody order (NSC) while the remaining two were re-referred for violating a temporary release from secure custody order (TR/SC). TR/SC orders were largely eliminated from practice in Dane County but are still used on occasions when The Court determines there is a need for stricter release conditions or that a youth needs to be treated or assessed at a hospital or residential treatment facility while under a secure custody order. The remaining three percent of referrals came to JRC to be placed in the Juvenile Detention Center or Shelter Home to serve sanction days (See **Sanctions** section for more information). In 2024, 354 youths were referred to JRC and an additional 62 youths were re-referred for a total of 423 referrals. To avoid duplicate data, re-referrals are not included in the information that follows.

JRC Referral Categories

Youths referred to the Juvenile Reception Center are divided into three main referral categories. The categories are:

1. Youths alleged to have violated one or more criminal statutes.
2. Youths alleged to be in need of protection or services.
3. Court-related referrals (Court Order, Sanctions, Capias, etc.).

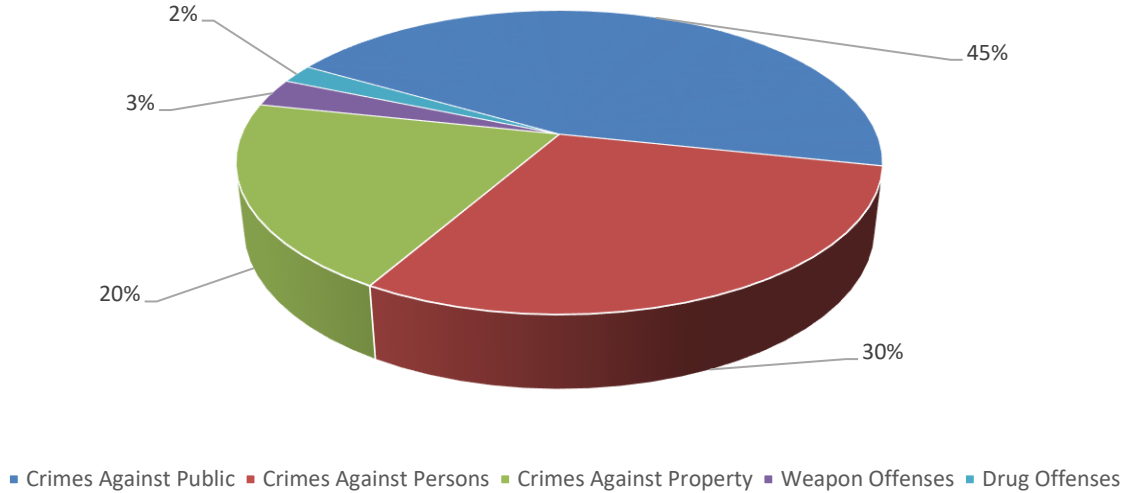
The percentage of youth listed in each category of Chart 4 reflects only that a youth referred to JRC fit into that category. A youth can potentially fall into more than one referral category and may be entered more than once in each category. For instance, a child who is referred for a capias and who has also been charged with Battery and Disorderly Conduct will be entered once in category three and twice in category one.



As illustrated in Chart 4 above, the majority (76%) of JRC referrals were for violations of criminal statutes. In 2024, 73% of referrals were a result of new law violations.

Category One: Violations of Criminal Statutes

**Violations of Criminal Statutes
Chart 5**



Crimes against public health and safety were the most common criminal statute violation in 2025, accounting for 45% of violations. Weapon and drug offenses are historically the least common criminal statute violations.

**Crimes Against Public Health and Safety
Table 6**

Crimes Against Public Health and Safety	Male	Female	Total
Bomb Scare	1	0	1
Disorderly Conduct (DC)	70	51	121
Disorderly Conduct While Armed	8	4	12
Eluding a Police Officer	6	1	7
Jail Hold – Adult Traffic Charge	3	0	3
Mistreatment of Animals	1	0	1
Operating Under the Influence	0	1	1
Reckless Driving	1	1	2
Resisting/Obstructing	34	22	56
Terrorist Threats	3	0	3
Total	127	80	207

Disorderly conduct (121) and resisting/obstructing (56) charges account for eighty-six percent of the referrals in this subsection.

**Crimes Against Persons
Table 7**

Crimes Against Persons	Male	Female	Total
Battery	36	22	58
Battery-Substantial	8	2	10
Battery to Health Care Provider	3	0	3
Battery to Police Officer	3	2	5
Battery to Police Officer – Attempted	1	2	3
Discharging Bodily Fluid at Law Enforcement	2	1	3
Exposing Genitals	1	0	1
Homicide – First Degree Attempted	1	0	1
Intimidation of Victim	1	0	1
Jail Hold – Adult Criminal Charge	6	0	6
Misappropriate ID Info	1	0	1
Possession of Child Pornography	1	0	1
Reckless Endangering Safety	6	0	6
Reckless Injury – First Degree	7	0	7
Robbery	2	0	2
Robbery-Armed	8	0	8
Robbery-Attempted Armed	1	0	1
Robbery-Strong Arm	4	0	4
Sexual Assault – 4 th Degree	1	0	1
Sexual Assault of a Child – 1 st Degree	11	0	11
Sexual Assault of a Child – 2 nd Degree	2	0	2
Threats to Injure	0	3	3
Total	106	32	138

Youth referred for allegedly committing offenses against other persons represented thirty percent of delinquency referrals in 2025. Battery-related charges (79) represented the majority of the entries in this subsection.

**Crimes Against Property
Table 8**

Crimes Against Property	Male	Female	Total
Alteration of Identification	1	0	1
Burglary-Commercial	6	1	7
Burglary-Residential	3	0	3
Criminal Damage to Property (CDTP)	25	9	34
Identity Theft	1	0	1
Operating Motor Vehicle Without Owner's Consent (OMVWOC)	15	2	17
OMVWOC-Passenger	6	4	10
Possession of Burglary Tools	3	0	3
Receiving Stolen Property	1	0	1
Retail Theft	4	3	7
Theft	5	1	6
Unauthorized Use of Identifying Information	1	0	1
Total	71	20	91

Crimes against property accounted for twenty percent of delinquency referrals in 2025. Criminal damage to property (34) accounted for thirty-seven percent of the referrals in this subsection.

Tables 9 and 10 illustrate that referrals for weapons and drug charges are much less common than referrals for other violations of criminal statutes.

Crimes Involving Weapons

Table 9

Crimes Involving Weapons	Male	Female	Total
Carrying a Concealed Weapon	6	0	6
Possession of a Dangerous Weapon	8	0	8
Possession of a Firearm Replica	2	0	2
Total	16	0	16

Drug Offenses

Table 10

Drug Offenses	Male	Female	Total
Delivery of THC	1	0	1
Possession of Drug Paraphernalia	1	0	1
Possession of Psilocybin	1	0	1
Possession of THC	4	1	5
Total	7	1	8

Disorderly Conduct (121) was the most common violation of criminal statutes in 2025. Battery (58) and Resisting/Obstructing (56) were the next most common violations of criminal statutes. Disorderly Conduct, Battery, and Resisting/Obstructing were the most common referral reasons for both males and females in this category. 2024 data showed a fifty-two percent decline in referrals for charges related to operating a motor vehicle without owner's consent (OMVWOC) compared to 2023. OMVWOC-related referrals remained relatively low in 2025, accounting for 27 violations of criminal statutes compared to 30 in 2024.

Category Two: Children and Juveniles in Need of Protection or Services

This referral category includes referrals to JRC for reasons not involving law violations. Youth alleged or found to be incompetent or uncontrollable are referred to as Juveniles in Need of Protection or Services (JIPS). Children suffering from illness, injury, or in immediate danger from their surroundings are referred to as Children in Need of Protection or Services (CHIPS). Youth placed as an emergency change of placement and runaways are also included in this category.

In 2025, 47 youths were referred for JIPS and CHIPS reasons. Most of these youth are placed directly at the Shelter Home and never come to JRC for an intake decision. The following table describes the population referred to JRC as being JIPS or CHIPS.

Table 11

CHIPS and JIPS Referrals	Male	Female	Total
Emergency Change of Placement (.357)	11	17	28
Children in Need of Protection or Services (CHIPS)	12	4	16
Juveniles in Need of Protection or Services (JIPS)	0	0	0
Runaway	3	0	3
Total	26	21	47

Category Three: Court-Related Referrals

Category three includes youth taken into custody for reasons related to an order of the Court. Youth in this category may be referred to JRC directly after a Court hearing or from a Juvenile Correctional facility so as to be available for Court in Dane County (Writ). Youth in this category may also be referred to JRC pursuant to a directive by the Court itself for failure to appear (Capias) or at the request of the Dane County District Attorney’s office (Warrant). This category also includes referrals for court-imposed Sanctions due to violations of court ordered conditions as well as youth referred as courtesy holds from other counties. Youth referred to detention or shelter home as a courtesy hold from other counties and youth referred for violations of Department of Corrections supervision are also included in this category.

Youth referred to JRC pursuant to Court-related activities or orders represented sixteen percent of all referrals to JRC in 2025. The information provided in Table 12 on the following page gives a more in-depth description of this population and the various reasons for referral.

Table 12

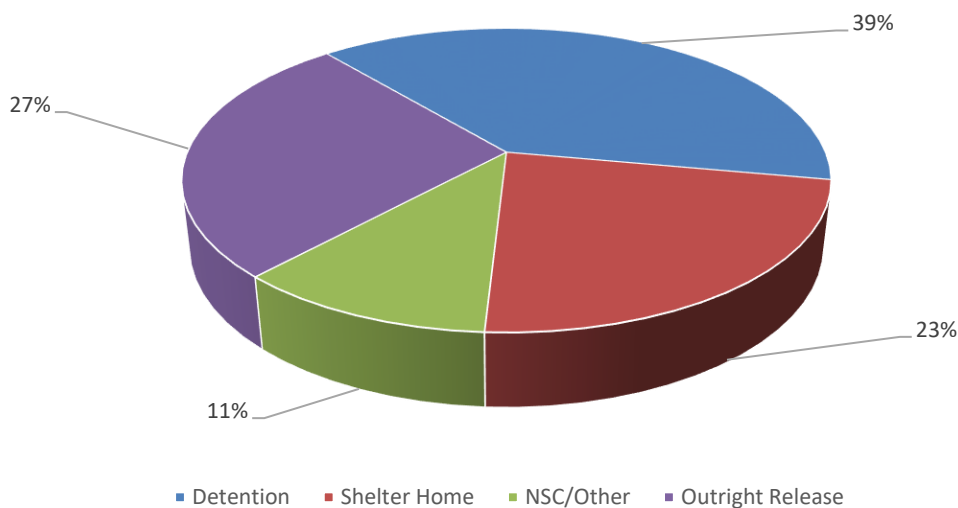
Juvenile Court Related Referrals	Male	Female	Total
Capias	11	5	16
Court-Ordered Custody	1	0	1
Court-Ordered Home Detention	20	7	27
Courtesy Hold – Change of Placement	1	2	3
Courtesy Hold - Non-Secure Custody	1	4	5
Courtesy Hold - Secure Custody	1	1	1
Courtesy Hold – Shelter Sanctions	4	0	4
DOJC Aftercare Violation	17	3	20
Sanctions	10	4	14
Warrant	1	1	2
Writ	3	0	3
Total	70	27	97

Alleged Ordinance Violations

Law enforcement personnel may issue citations to youth who violate municipal ordinances, which may include citations for underage drinking, obstructing or resisting an officer, and curfew violations. If at all possible, law enforcement officers are required to release youth to their parental homes if taken into custody solely for violating a municipal ordinance. Citation-related referrals to JRC are most commonly made in cases where the parents are unavailable, related family problems exist, or the youth is also referred on other offenses. JRC typically assists law enforcement in these situations by contacting the youth’s placement so they can be released.

Placement of Initial Referrals to JRC

Placements
Chart 13



When a youth is referred to JRC for a custody decision, unless the outcome is already determined (e.g., sanctions), the on-duty counselor determines the appropriateness of placing the youth under a temporary custody order. If grounds exist, a counselor may place the youth under either Secure or Non-Secure Custody. The criteria for placing a youth under either form of custody are discussed in greater detail later in this section. If Non-Secure Custody is appropriate, the counselor may place the child at the Dane County Shelter Home, in the parental home, in a relative's home, or in the home of another responsible adult. Should the counselor determine that a custody order is not necessary at the time of referral, the child is released. In certain cases with serious charges, counselors at the Juvenile Reception Center are given a directive from the Court and/or policy as to the most appropriate placement for a referred youth.

Table 4 illustrates a percentile breakdown of the determination of the need for custody and placement for youth referred for intake in 2025. Thirty-nine percent were placed in Secure Custody. A portion of those placed in Secure Custody were placed under court order, as a DOJC hold, or as an out-of-county courtesy hold. Placing a youth in Secure Custody requires that a Counselor will have found that at least one of the following applies:

1. Probable cause exists to believe that the juvenile has committed a delinquent act and either presents a substantial risk of physical harm to another person or a substantial risk of running away so as to be unavailable for future court.

2. Probable cause exists to believe that the juvenile is a fugitive from another state or has run away from another secured facility and there has been no reasonable opportunity to return the juvenile.
3. Probable cause exists to believe that the juvenile, having been placed in Non-Secure Custody by an intake worker, judge, or court commissioner, has runaway or committed a delinquent act and no other suitable alternative exists.
4. Probable cause exists to believe that the juvenile has been adjudged or alleged to be delinquent and has run away from another county and would run away from Non-Secure Custody pending his or her return.¹

The percentage of youth held in Secure Custody at the time of intake reflects the severity of the alleged delinquencies for which youth were referred.

According to year 2025 statistics, thirty-four percent of referrals for a custody decision resulted in a determination of the need for Nonsecure Custody. Twenty-three percent were placed under Non-Secure Custody at the Dane County Shelter Home (See **Juvenile Shelter Home** section for greater detail). Eleven percent of youth were placed under Nonsecure Custody in other placements. Most (29) were placed in their parental home while two were placed in a relative's home and one was placed in a foster home. There were an additional 16 youth age twelve and older placed under Nonsecure Custody for Emergency Custody reasons by the Dane County Department of Human Services that are excluded from this data. A counselor's determination that there is a need for Nonsecure Custody is based upon the belief that probable cause exists to believe the youth is within the jurisdiction of the court and there is probable cause to believe:

1. That if the juvenile is not held he or she will commit injury to the person or property of others;
2. That the parent, guardian, or legal custodian of the juvenile or other responsible adult is neglecting, refusing, unable, or unavailable to provide adequate supervision and care and that services to ensure the juvenile's safety and well-being are not available or would be inadequate; and/or
3. That the juvenile will run away or be taken away so as to be unavailable for proceedings of the court or its officers.²

Youth placed under Nonsecure Custody for a delinquency are subject to the same custody hearing guidelines as those placed under Secure Custody. A custody hearing must be held within 24 hours (excluding weekends and legal holidays) and the person/agency with whom the child has been placed is expected to ensure that the youth will be available for court.

All youth who are referred to the Juvenile Reception Center for a custody decision, and for whom a temporary custody status is not necessary, are released either to their parental home or to another responsible adult as soon as possible. Twenty-seven percent of all youth referred for a custody decision in 2025 were released outright. Youth in this category were either not found to meet the requirements for Nonsecure or Secure Custody or it was determined that adequate supervision and services were already in place for the youth and their family.

¹ Adapted from Chapter **938.208 (1)** through **(6)**, Wis. Stats.

² Adapted from Chapter **938.205 (1)** (1)(a) through (c), Wis. Stats.

History of Custody Decisions made by JRC*
Table 14

Placement of Initial Referrals:	2021	2022	2023	2024	2025
Secure Custody	163 (57%)	188 (52%)	159 (49%)	138 (44%)	108 (39%)
Nonsecure Shelter	44 (15%)	64 (18%)	66 (20%)	73 (23%)	63 (23%)
Nonsecure Other	41 (14%)	59 (16%)	54 (17%)	59 (19%)	32 (11%)
Outright Released	41 (14%)	51 (14%)	47 (14%)	42 (14%)	75 (27%)
Total	289	362	326	312	278

*Excludes Sanctions, Change of Placement, Court-Ordered HDP, Emergency Custody, and Out-Of-County Holds

In prior years, only sanctions, change of placements, and court-ordered custody placements were excluded from this data. In 2024, it was decided to also exclude emergency custody and out-of-county courtesy holds to more accurately reflect the decisions made by JRC counselors upon intake.

Places of Release

The Juvenile Reception Center documents the places to which youth are released for all programs in the department (JRC, Detention, Shelter Home, or Home Detention Program) when a custody order or placement is terminated and the file is closed. In certain circumstances, the youth may remain at Shelter Home or in Detention due to a new referral or based on a court order (e.g., the imposition of sanctions). Table 17 illustrates the various placements to which youth were released in 2025. Sixty-six percent of youth were released back to their parental home.

Table 15

Place of Release	Male	Female	Total
AWOL	0	1	1
Briarpatch	3	0	3
Dane County Department of Human Services	1	1	2
Dane County Jail	3	0	3
Detention	5	1	6
Division of Juvenile Corrections	8	0	8
Foster Home	7	14	21
Group Home	2	3	5
Other County	6	5	11
Other State	0	1	1
Parental Home	165	70	235
Relative Home	17	9	26
Residential Treatment	14	7	21
Responsible Adult	5	1	6
Self	1	0	1
Shelter Home	4	0	4
Total	241	113	354

Demographic Information

Youth referred to the department in 2025 can be described by a variety of characteristics. Sixty-eight percent of the referrals were male. White youths constituted twenty-two percent of all referrals whereas minorities constituted seventy-eight percent. Black males were the largest group of referrals, accounting for forty-two percent of all referrals in 2025.

The average age of all referrals in 2025 was 14.7 years, slightly younger than the average of 14.9 years in 2024. The average age of girls was 14.8 years while the average age of boys was 14.7 years. Fifty-six percent of all referrals were 15 or 16 years old. The following charts provide a detailed illustration of the population referred to JRC for intake in 2025.

Age of Children Referred to JRC

Table 16

Age	Male	Female	Total
10	3	0	3
11	0	2	2
12	20	4	24
13	21	12	33
14	48	27	75
15	69	30	99
16	69	31	100
17	11	7	18
Total	241	113	354

Race of Referrals

Table 17

Race	Male	Female	Total
Asian	2	0	2
Black	148	69	217
Hispanic	17	8	25
Multi-Racial	19	10	29
Native American	0	1	1
Native Hawaiian	0	1	1
White	53	24	77
Unknown	2	0	2
Total	241	113	354

**Number of Referrals Prior to a 2025 Referral
Table 18**

Prior Referrals	Male	Female	Total
Zero	100	66	166
One	33	17	50
Two	14	3	17
Three	4	1	5
Four	1	0	1
Five	2	0	2
Total	154	87	241

Two hundred and forty-one individuals accounted for 354 referrals to JRC in 2025. Sixty-nine percent did not have any referrals prior to 2025.

Residence of Youth Referred to the Juvenile Court Program

Chart 19 through Table 22 illustrate the residence of youth referred. The residence of the youth is recorded as the last residence prior to referral. Residence of the youth is obtained from law enforcement or other sources. All referrals that include an address and address changes are counted for youth if a youth is re-referred.

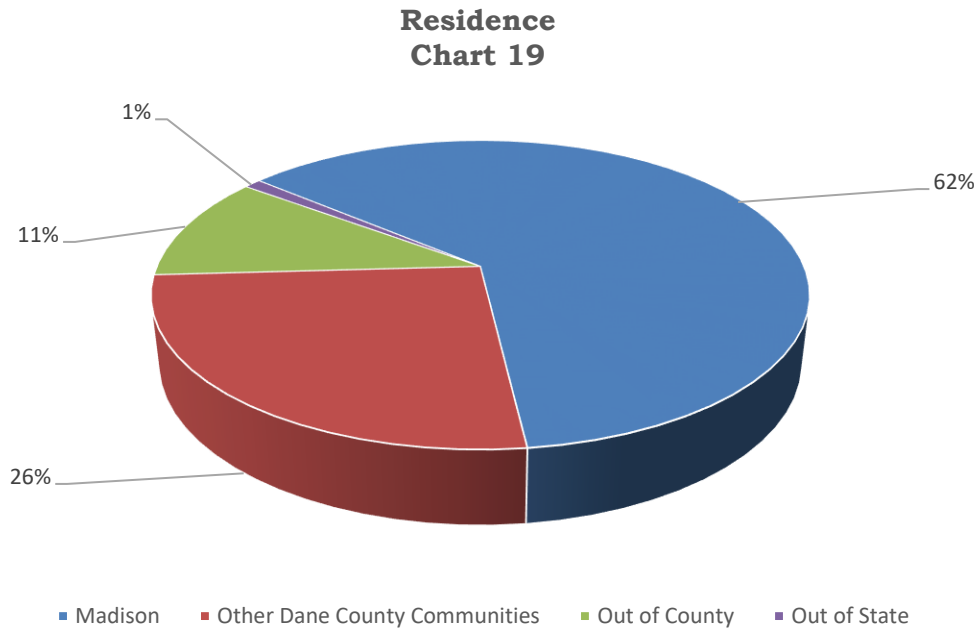


Table 20

Residence: Dane County	Male	Female	Total
Belleville	1	0	1
Brooklyn	0	0	1
Cottage Grove	3	1	4
Cross Plains	2	1	3
Deerfield	1	0	1
DeForest	1	0	1
Fitchburg	4	4	8
Madison	147	72	219
Marshall	3	1	4
Mazomanie	6	1	7
McFarland	2	0	2
Middleton	4	4	8
Monona	3	2	5
Mount Horeb	7	0	7
Oregon	4	0	4
Stoughton	2	4	6
Sun Prairie	16	6	22
Verona	3	4	7
Waunakee	1	0	1
Total	210	101	311

Table 21

Residence: Other Wisconsin Counties	Male	Female	Total
Brown	1	0	1
Columbia	2	4	6
Crawford	1	1	2
Dodge	1	0	1
Green	4	0	4
Jefferson	1	0	1
Lafayette	1	0	1
Lincoln	2	0	2
Milwaukee	6	1	7
Oconto	1	0	1
Rock	3	1	4
Sauk	0	2	2
Walworth	0	2	2
Waukesha	3	0	3
Waupaca	1	0	1
Winnebago	1	0	1
Wood	1	0	1
Total	29	11	40

Table 22

Residence: Other States	Male	Female	Total
Indiana	0	1	1
Iowa	1	0	1
Minnesota	1	0	1
Total	2	1	3

School Enrollment Status

Information regarding school enrollment is obtained at the time of the referral. This information, when available, reveals only where a referred youth self-reports to be enrolled and/or attending school and does not necessarily reflect school attendance, status, or other school-related issues.

Table 23

High Schools: MMSD	Male	Female	Total
Alternative School Programs	8	2	10
Capital High	1	4	5
East	31	23	54
LaFollette	24	8	32
Memorial	27	9	36
Shabazz	1	0	1
West	16	7	23
Total	108	53	161

Table 24

Middle and Elementary Schools: MMSD	Male	Female	Total
Black Hawk	0	3	3
Cherokee	2	1	3
Hamilton	1	0	1
Jefferson	2	0	2
Lakeview	1	0	1
O'Keeffe	5	5	10
Sennett	1	0	1
Sherman	3	1	4
Spring Harbor	4	0	4
Toki	5	3	8
Whitehorse	4	1	5
Total	28	14	42

Table 25

Other Dane County Districts	Male	Female	Total
Belleville	1	0	1
Deerfield	1	0	1
DeForest	1	0	1
Marshall	2	0	2
McFarland	5	0	5
Middleton	3	5	8
Monona Grove	1	1	2
Mount Horeb	2	2	4
Oregon	4	2	6
Stoughton	2	4	6
Sun Prairie	14	6	20
Verona	4	1	5
Waunakee	1	0	1
Wisconsin Heights	8	1	9
Total	49	22	71

Table 26

Other School Status	Male	Female	Total
Out of County	29	11	40
Out of State	2	1	3
Not Enrolled	1	4	5
Unknown	24	8	32
Total	56	24	80

Referring And/Or Apprehending Agency

The Madison Police Department is the leading source of referrals to JRC, accounting for forty-six percent of all referrals in 2025. Court referrals include sanctions and writs in addition to youth who are taken into nonsecure custody by the Court.

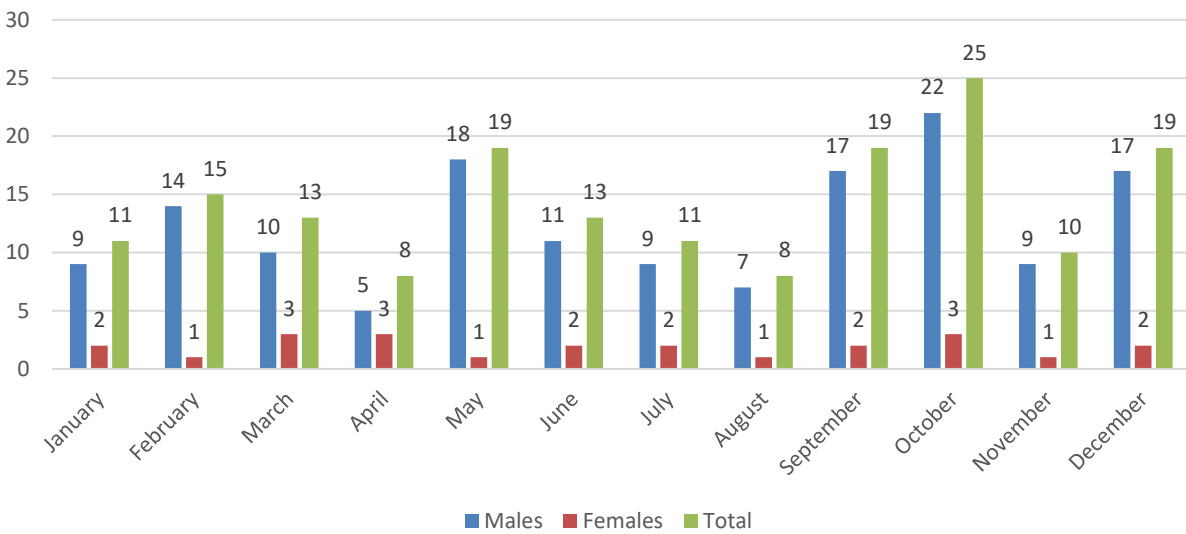
Table 27

Referring Agencies	Male	Female	Total
Belleville PD	1	0	1
Cottage Grove PD	2	1	3
Court	30	14	44
Cross Plains PD	2	0	2
Department of Human Services	17	11	28
Dane County Sheriff's Office	17	7	24
Deforest PD	0	1	1
Division of Juvenile Corrections	6	0	6
Fitchburg PD	12	5	17
Madison PD	110	53	163
Maple Bluff PD	1	0	1
Marshall PD	2	0	2
McFarland PD	2	0	2
Middleton PD	3	2	5
Monona PD	4	3	7
Mount Horeb PD	3	1	4
Oregon PD	1	0	1
Other County	6	4	10
Stoughton PD	0	3	3
Sun Prairie PD	13	7	20
University of Wisconsin PD	1	0	1
Voluntary	7	1	8
Wisconsin State Patrol	1	0	1
Total	241	113	354

Juvenile Detention

The Dane County Juvenile Detention Center primarily provides secure placement for youth in need of temporary secure placement during all or a part of their court case. Some youths are placed in Detention on the basis of a sanction for violating their previous court-ordered rules of supervision. Youth from other area counties are also accepted for placement, which is a revenue source for the department.

**Admissions Per Month
Chart 28**

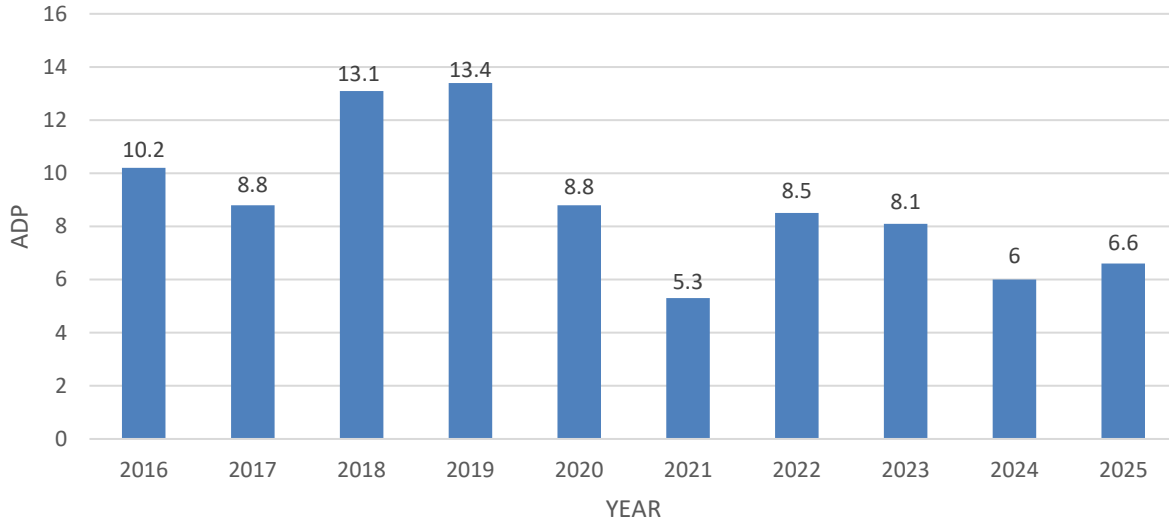


**Detention Average Daily Population (ADP)
Table 29**

Month	Male	Female	Total
January	6.8	2.0	8.8
February	7.1	0.9	8.0
March	5.4	1.1	6.5
April	3.3	0.4	3.7
May	5.1	0.3	5.4
June	5.5	0.1	5.6
July	5.1	0.2	5.3
August	5.4	0.1	5.5
September	5.1	0.1	5.2
October	8.8	0.2	9.0
November	7.9	0.2	8.1
December	7.9	0.4	8.3
Average	6.1	0.5	6.6

In 2025, 171 youths were admitted into detention, down seventeen percent from 2024 when 205 youths were admitted. The number of males decreased from 155 in 2024 to 148 in 2025 and the number of females decreased from 50 to 23. The average daily population in detention rose to 6.6 residents per day from 6.0 in 2024. The ten-year ADP history is noted in the following chart.

**Detention ADP History
Chart 30**



**Reasons for Admission
Table 31**

Reason	Male	Female	Total	Percent
New Charge	60	5	65	38.0%
Custody Violation	37	7	44	25.7%
DOJC Hold	17	3	20	11.7%
Sanctions	12	5	17	9.9%
Capias	7	2	9	5.3%
Hold for Jail	9	0	9	5.3%
Hold for Court	2	0	2	1.2%
OOC Runaway	2	0	2	1.2%
Courtesy Hold	1	1	2	1.2%
Return from TR	1	0	1	0.5%
Total	148	23	171	100%

Custody Violation = Youth violated NSC or TR/SC order
 DOJC = Violation of Department of Corrections aftercare supervision
 Courtesy Hold = Youths from other counties placed in Dane County Detention
 Hold for Court = Writ from LHS/CLS to Dane County for Court
 Fugitive = Runaway from another state
 Hold for Jail = Youth held in Detention for Adult Court charges
 Return from TR = Return from temporary release to hospital or treatment
 OOC Runaway = Runaway from another county

**Number of Admissions
Table 32**

Admissions	Male	Female	Total	Total Admissions
One	41	10	51	51
Two	18	5	23	46
Three	11	1	12	36
Four	1	0	1	4
Five	4	0	4	20
Six	1	0	1	6
Seven	0	0	0	0
Eight	1	0	1	8
Total	77	16	93	171

A total of 93 individuals accounted for the 171 admissions into detention in 2025. Seventy-seven males accounted for 148 admissions while 16 females accounted for 23 admissions.

**Age of Youth Admitted into Detention
Table 33**

Age	Male	Female	Total
10	0	0	0
11	0	0	0
12	9	0	9
13	14	0	14
14	32	4	36
15	48	6	54
16	39	9	48
17	6	4	10
Total	148	23	171

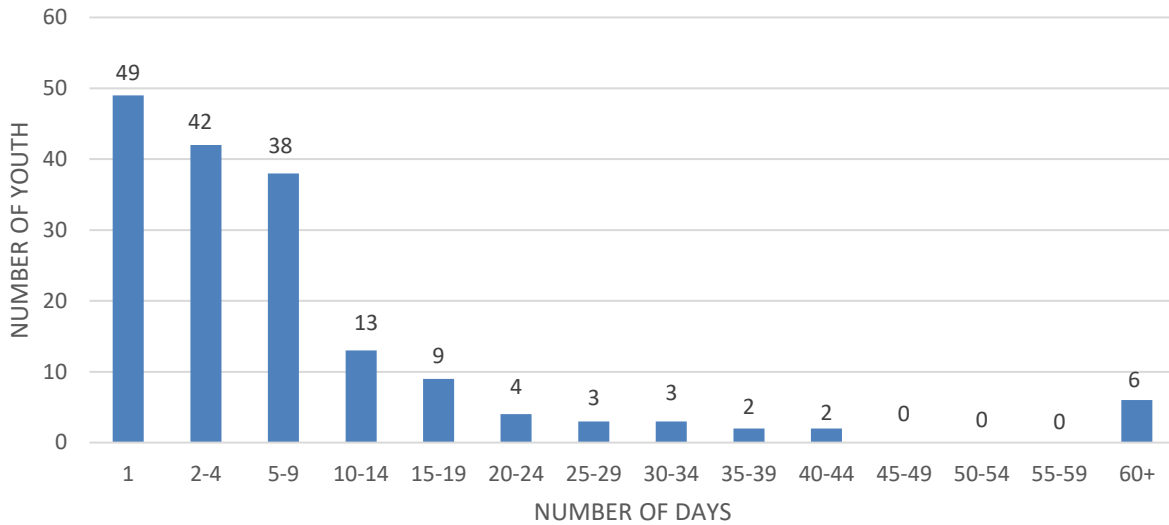
The average age of youth admitted into detention was 14.9 years. The average age for males was 14.8 years while the average age for females was 15.6 years.

**Race of Youth Admitted into Detention
Table 34**

Race	Male	Female	Total
Black	108	12	120
Hispanic	15	3	18
Multi-Racial	7	3	10
Native American	0	1	1
White	18	4	22
Total	148	23	171

Eighty-seven percent of youth admitted into detention were a racial minority in 2025, up from seventy-nine percent in 2024.

**Range of Length of Stay (LOS)
Chart 35**



Seventy-five percent of youth in detention stayed for less than 10 days, up from 68% in 2024. The average length of stay for youth in detention was 10.2 days in 2025, up from 9.2 in 2024. Males admitted into detention stayed for an average of 10.8 days (9.2 in 2024) while females stayed for an average of 6.2 days (9.3). The average length of stay is broken down by race in the following table.

**Length of Stay by Race
Table 36**

Race	Males	Days of Care	Females	Days of Care	Total	Days of Care	Ave LOS
Black	108	1216	12	83	120	1299	10.8
Hispanic	15	123	3	9	18	132	7.3
Multi-Racial	7	214	3	34	10	248	24.8
Native American	0	0	1	1	1	1	1.0
White	18	50	4	17	22	67	3.0
Total	148	1603	23	144	171	1747	10.2

The data in this report is based on JRC records maintained in the Managed Access to Juvenile Records database. Data in this section may vary slightly from other data sources resulting in minor record duplications or discrepancies. LOS data includes and end date of 12/31/25 regardless of a youth continuing in placement into 2026. It should also be noted that new DOJ rules require youth who are charged with adult crimes to be held in detention, resulting in an increase of stays over 60 days. This also resulted in the decision to accept fewer out-of-county residents as courtesy holds.

DANE COUNTY JUVENILE DETENTION PROGRAMMING

Each year, youth in Detention benefit from diverse programming facilitated by some local organizations and department staff. In addition to a full school day provided by the Madison Metropolitan School District, youth have participated in programs that teach life skills, coping mechanisms, job skills, physical health improvement and technical skills. The following are the programs that the youth have participated in last year:

Staff Facilitated Psycho-Educational Groups

Staff facilitate groups that allow youth to work on decision-making skills, healthy relationships, anger management, honesty, integrity and other character-building activities. Youth participate in these groups on a daily basis.

Yoga

Volunteers lead this activity once per week.

Madison Public Library

Staff and volunteers from the Madison Public Library Bubbler program teach youth the art of personal branding and messaging by the use of technology including computers, iPads, etc. once per week. Youth have made podcasts, animated videos, created music and videos, created art, learned horticulture, painted murals in the facility, learned culinary skills and participated in numerous other creative activities.

Dogs on Call

Dogs on Call, through their membership in Pet Partners, are a community organization that provide health and therapy through interaction with dogs and occasionally cats. They provide services for residents in assisted living, UW students, hospitals and the Dane County Juvenile Detention Center four times per month. During each visit, youth and staff pet dogs and talk with their owners, which serves as a therapeutic tool for youth. Some youths have never been in contact with animals and therefore this serves as their first experience being around a pet of any kind.

Community Connections and Church Services

Every Tuesday evening, an ecumenical group of pastors facilitates a voluntary group session as well as individual meetings with youth. Each Sunday a pastor leads a church service for any youth who would like to attend.

UW School of Psychology

Psychology students provide weekly discussions with youth on a variety of topics including decision-making, conflict resolution, problem solving, and relationships.

Cooking Class

Every Thursday morning, a Detention staff member leads a cooking class in the Detention kitchen. Youth learn to prepare meals that they would be able to make on their own and all staff and youth are also able to eat what they prepare.

UW Science Group

One to two times per month, youth participate in a Science Group in which they learn about gravity, weight, volume, etc. through safe experiments facilitated by Master's level science students.

ATTA Program

Developed in 2025, the ATTA Program is a 6-month voluntary pre-dispositional program that serves Dane County males that are 13-17 years old. The first resident was accepted in 2026. The purpose of ATTA is to provide a safe and therapeutic learning environment that will strengthen family relationships and promote youth success through developing trusting relationships and building youth skills.



Life Skills

Staff-led group that introduces and teaches every day skills needed to succeed once living on their own. Examples are resume building, cooking, money management, etc.

Dialectical Behavior Therapy (DBT)

Skills taught and practiced in a group setting that teach simple strategies to improve impulsivity and emotional dysregulation. Skills are then encouraged to be used in real time situations.

Madison Public Library

Staff and volunteers from the Madison Public Library Bubbler program teach youth the art of personal branding and messaging by the use of technology including computers, iPads, etc. once per week. Youth have made podcasts, animated videos, created music and videos, created art, learned horticulture, painted murals in the facility, learned culinary skills and participated in numerous other creative activities.

Comprehensive Community Services (CCS)

For residents that qualify for CCS, the CCS program offers a wide array of psychosocial rehabilitation services. These are services and support activities that assist CCS clients with mental health and/or substance use conditions to achieve their highest possible level of independent functioning, stability, and independence, and to facilitate recovery.

Anesis

An agency that focuses on mental health. They offer individual and family therapy and will do group activities with our residents as well as family therapy.

Book Club

Staff led group discussion on chosen book to read together and discuss. Questions and further discussion can be developed from reading together.

Destinations Career Academy of Wisconsin

Online school used in ATTA that allows students to focus on a chosen career path as well as assist in credit recovery. Students have opportunities to get certified in different job areas as well as apprenticeships before graduation.

Recreational Trips & Outings

Residents will have opportunities to experience fun, recreational, and often educational places. This would include: hiking, fishing, swimming, museums, sports games, theater, etc.

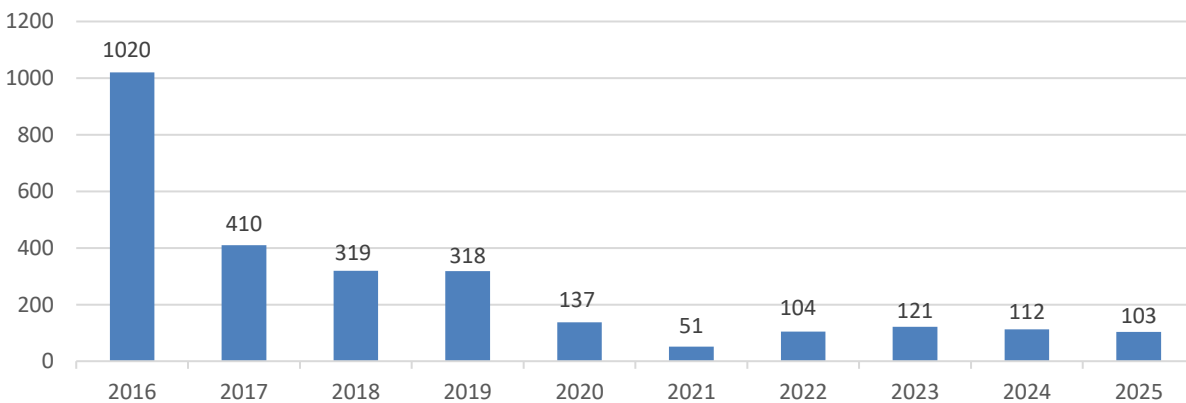
Juvenile Court Sanctions

One of the sanctions the Court may impose when a youth fails to comply with conditions of a court order is to place the youth in the secure detention facility or non-secure shelter home for a period of up to ten days per violation. In some cases, multiple violations result in consecutive sanctions being imposed (e.g., three violations could result in a sanction of thirty days).

In 2000, the District Attorney’s Office, the Juvenile Court Program, and other county service providers collectively united to initiate the Weekend Report Center as an alternative to sanctions in detention. In addition to the creation of the Weekend Report Center, the Courts also began ordering sanctions to places other than detention. Such orders placed some youth at the Dane County Shelter Home or at home with electronic monitoring.

Sanction days are either served all at once or include stayed days that can be imposed before the expiration of the sanction order. Imposed sanction days are a part of the original sanction order, but the imposition of the days only occurs when youths further violate the dispositional court order and a social worker imposes days. Sanction orders that were stayed without any days physically served are excluded from the data. In 2025, there were 14 sanction orders served that resulted in a total of 21 sanction placements that totaled 103 days of sanctions served. Seventy-six of those days were served in detention while 27 days were served at the Dane County Shelter Home. The 14 sanction orders in 2025 where at least one day was served resulted in an average of 7.4 imposed days per order. In 2024, there were 13 sanction orders that led to 112 sanction days served. Generally, sanction orders have been on the decline since 2016 when there were 76 orders for a total of 1020 days served. Starting in 2020, sanctions declined even more due to the COVID pandemic.

Total Sanction Days Served 2016-2025
Chart 37



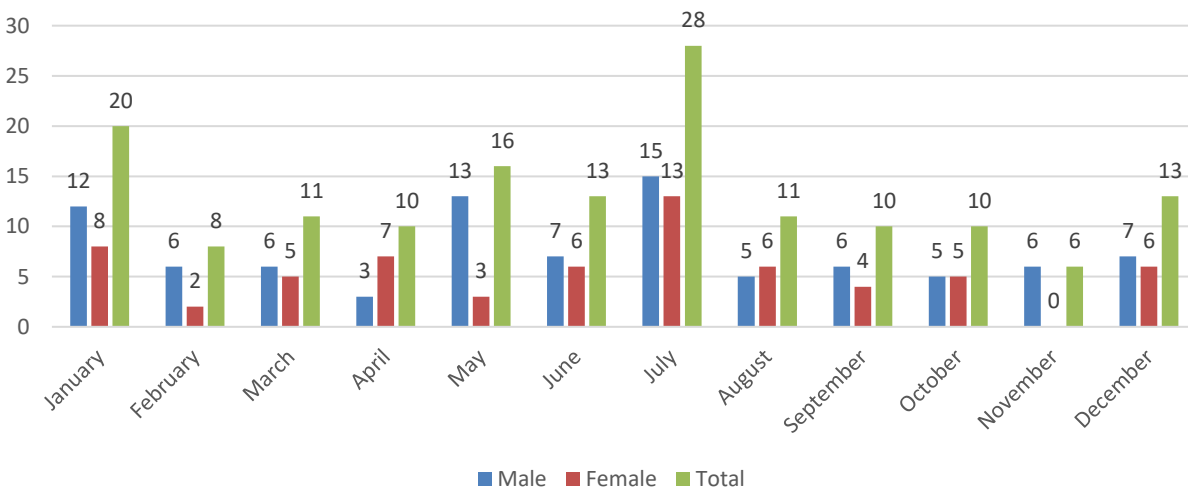
Shelter Home

Located at 2402 Atwood Avenue in Madison since 1975, the Shelter Home is Dane County's non-secure, short-term residential facility for youth who have been removed from their home or other placement and are awaiting court action or another placement. Shelter Home serves up to a total of 16 boys and girls ranging in age from 10 through 17.

Residents are placed at Shelter Home by the Juvenile Reception Center and/or by a court order entered by a Juvenile Court Commissioner or Dane County Juvenile Court Judge. Residents are placed for CHIPS or Delinquency reasons and are under a temporary physical custody order. Residents may remain at Shelter Home for up to 60 days following each admission. Shelter Home can also accept residents placed on the basis of an "Emergency Change of Placement" (Emergency-COP), pursuant to Wisconsin Statute 48.357 and 938.357. Residents placed under this status are admitted on the basis of Shelter Home staff approval, require no physical custody order, and are limited by statute to 20 days. Residents can also be placed by Juvenile Court Judges to serve sanctions days. These placements represent days spent at Shelter Home as a consequence for violation of a previous court order. Shelter Home also accepts youth from other counties.

The following tables and charts describe youth referred to the Shelter Home in a variety of ways. Note that admissions to Shelter Home are new admissions that may be of the same individual.

Shelter Home Admissions Per Month
Chart 38



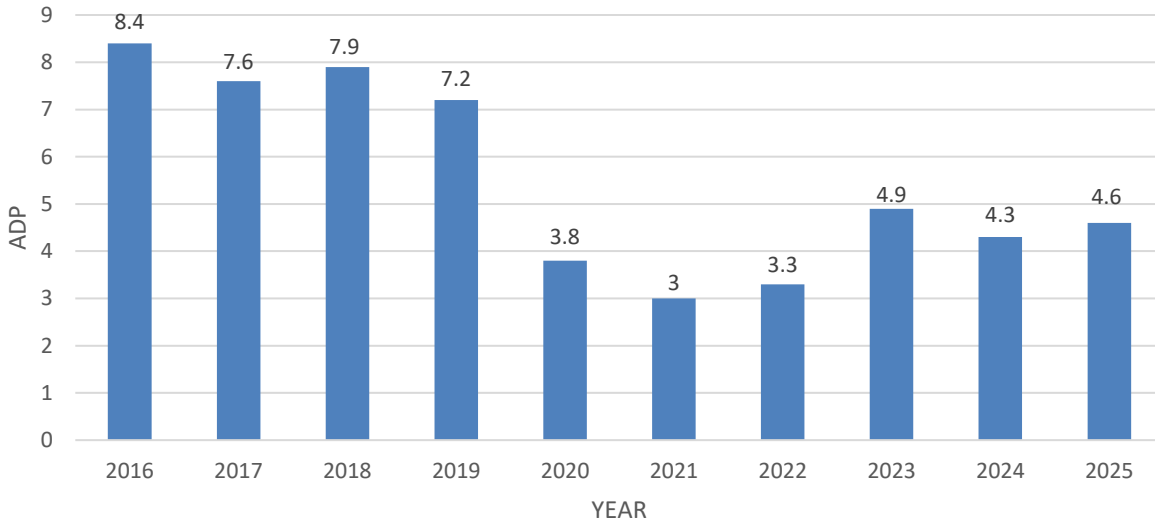
A total of 156 youths (91 males and 65 females) were admitted to Shelter Home in 2025, up from 147 in 2024.

**Shelter Home Average Daily Population (ADP)
Table 39**

Month	Male	Female	Total
January	4.0	2.1	6.1
February	3.2	2.2	5.4
March	1.3	2.7	4.0
April	2.0	2.2	4.2
May	2.9	2.3	5.2
June	4.1	1.6	5.7
July	2.4	1.9	4.3
August	2.1	3.6	5.7
September	1.1	2.6	3.7
October	3.2	2.2	5.4
November	2.6	0.0	2.6
December	2.6	0.9	3.5
Average	2.6	2.0	4.6

The average daily population for 2025 was 4.6, an increase from 4.3 in 2024. As illustrated in the following table, the average population has generally been on the decline since the COVID pandemic in 2020.

**Shelter Home ADP History
Chart 40**



**Basis for Referral to Shelter Home
Table 41**

Referral Basis	Male	Female	Total
CHIPS	6	2	8
COP (.357)	12	19	31
Delinquent	73	44	117
Total	91	65	156

Delinquency count includes sanctions and other court referrals

CHIPS = Children in need of protection and services. **COP (.357)** = Emergency change of placement.

In 1982, delinquency admissions represented 18.3% of all admissions. In 1992, delinquency admissions surpassed CHIPS for the first time (54.7%). In 2002, delinquency admissions represented 76.3% and in 2012, they totaled 82%. Delinquency admissions represented 75% of all admissions in 2025 and nondelinquent admissions, including CHIPS, change of placements, and runaways, accounted for 25% of all admissions. The level of need of the youth placed at Shelter has also increased over the past years as fewer placement options for youth with significant needs are available.

**Physical Custody Status at Time of Referral to Shelter Home
Table 42**

Custody Status	Male	Female	Total
NSC (Delinquent)	62	43	105
EC/NSC (CHIPS)	6	2	8
Emergency Change of Placement (.357)	12	19	31
Sanctions	8	0	8
TR/SC	3	1	4
Total	91	65	156

Emergency Change of Placements under Ch. 48.357 or Ch. 938.357

Most youth who are placed at Shelter Home are under an order of nonsecure custody which includes youth who are placed for delinquency (NSC) and CHIPS (EC/NSC) reasons. In 2025, 72% percent of youth at Shelter Home were under a nonsecure custody order. In 2024, 88% of youth were under a nonsecure custody order.

Offense or Basis for Shelter Home Admission*
Table 43

Reason for Referral	Number
Battery	46
Burglary	3
Capias	8
CHIPS	8
Citations	2
Court Ordered Nonsecure Custody	1
Courtesy Hold	12
Criminal Damage to Property	20
Disorderly Conduct	61
Disorderly Conduct While Armed	7
Emergency Change of Placement	28
Identity Theft	1
Misappropriate ID	2
Mistreatment of Animals	1
OMVWOC	5
OMVWOC-Passenger	3
Possession of THC	3
Reckless Endangering Safety	3
Reckless Injury	2
Resisting/Obstructing	15
Retail Theft	2
Sanctions	4
Threats to Injure	2

*Multiple reasons for referral can occur.

Disorderly Conduct (61) and Battery (46) were the most frequent reasons for Shelter Home placements in 2025.

Age of Youth Admitted to Shelter Home
Table 44

Age	Male	Female	Totals
10	9	0	9
11	1	2	3
12	13	4	17
13	13	15	28
14	11	11	22
15	23	22	45
16	16	10	26
17	5	1	6
Total	91	65	156

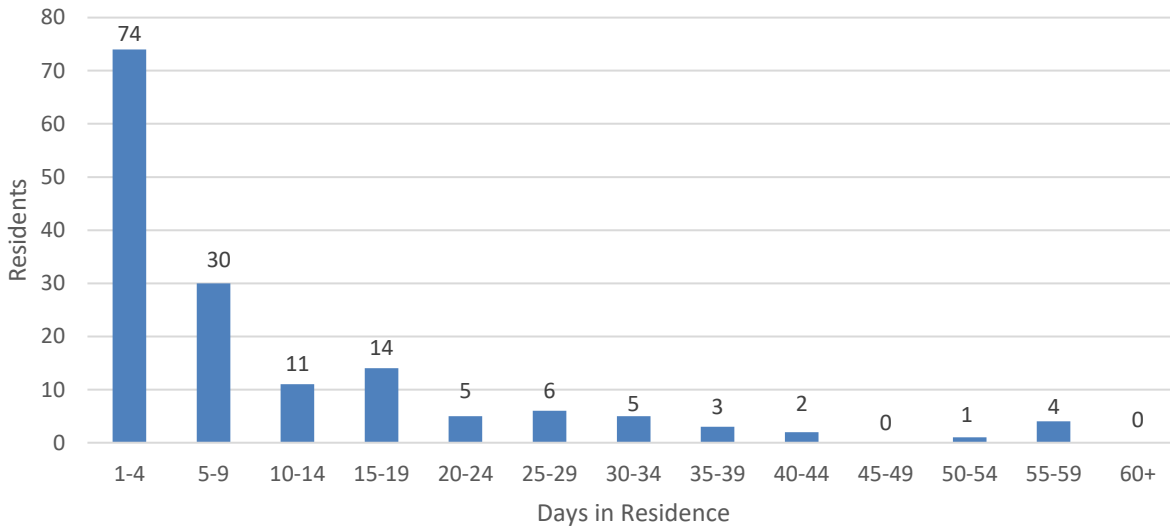
The average age of Shelter Home residents in 2025 was 14.0 years. The average age for females was 14.2 and the average age for males was 13.9.

Race of Admissions to Shelter Home
Table 45

Race	Male	Female	Total
Black	51	37	88
Hispanic	3	4	7
Multi-Racial	9	6	15
Native American	0	3	3
Native Hawaiian	0	1	1
White	28	14	42
Total	91	65	156

Minority members represented 73% of the Shelter Home population in 2025, an increase from 66% in 2024.

Shelter Home Length of Stay
Chart 46

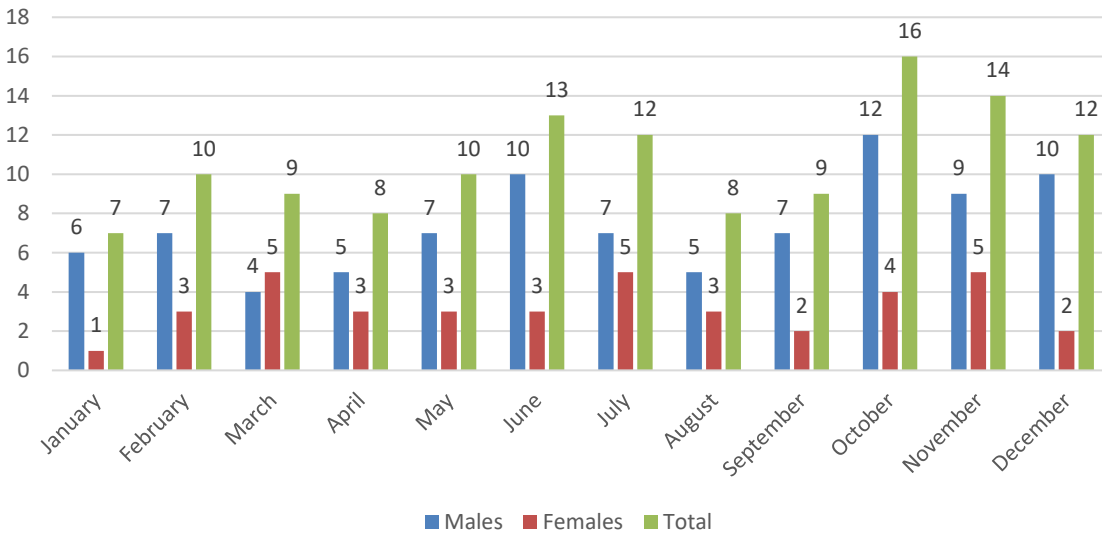


The average length of stay in 2025 was 10.2 days, down slightly from 10.4 days in 2024. The average length of stay in 1990 was 24.3 days, in 2000 it was 13.8 days and in 2010 it was 10.1 days. Of those admitted in 2025, 67% stayed less than 10 days.

Home Detention Program

The Home Detention Program (HDP) is designed to work with youth and their families on a short-term basis to enable the youth to continue living at home and avoid the need for Secure Custody (detention) or an alternative placement. HDP may also be assigned by the court to help monitor compliance with rules of supervision for a brief period subsequent to a court disposition. The goal is to help the youth remain at home, in school, and in the community.

Referrals to HDP Per Month
Table 47



A total of 128 cases were assigned to HDP in 2025, a slight increase from 124 cases in 2024. The length of time for which youth were under HDP supervision, starting in 2025 and in some cases extending into 2026, ranged from 2 to 118 days. Youth are assigned to HDP supervision through a court disposition or under temporary physical custody orders. Seventy-eight percent of assigned youth in 2025 were under an order of nonsecure custody. Youth who were court ordered to HDP as a bridge to the Intensive Supervision Program (ISP) or Briarpatch Youth Services (BYS) comprised 22% of HDP referrals. All of the assigned youth were alleged or adjudicated delinquent.

**Custody Status of Youth Assigned to HDP
Table 48**

Custody Status	Male	Female	Total
Nonsecure Custody	69	31	100
Court-Ordered Bridge to ISP/BYS	20	8	28
Total	89	39	128

**Age of HDP Referrals
Table 49**

Age	Male	Female	Total
10	0	0	0
11	0	0	0
12	10	0	10
13	18	0	18
14	9	14	23
15	33	15	48
16	19	9	28
17	0	1	1
Total	89	39	128

The average age of youth assigned to HDP was 14.5 years (14.4 for males and 14.9 for females). The largest age group was 15 year olds who accounted for 38% of youth assigned to HDP. Minorities made up 87% of youth assigned to HDP which is a higher rate than the 78% that accounted for all JRC intakes.

**Race of HDP Referrals
Table 50**

Race	Male	Female	Total
Black	68	36	104
Hispanic	2	0	2
Multi-Racial	5	0	5
White	14	3	17
Total	89	39	128

Youth assigned to HDP attend school in communities throughout Dane County. Complying with HDP rules normally includes participation in a school program. The HDP worker monitors school attendance and the worker will report on the youth's behavior to the Court. Table 46 lists the self-reported schools that each youth attended at the time of intake.

Schools of HDP Participants
Table 51

School	Students
Alternative	6
Black Hawk	2
Capital High	2
Cherokee	4
East	33
Jefferson	2
LaFollette	3
Marshall	2
Memorial	21
Middleton	3
Monona Grove	1
Not Enrolled	5
Other County	3
O'Keeffe	6
Sennett	3
Sherman	3
Spring Harbor	2
Stoughton	5
Sun Prairie	4
Toki	2
Verona	3
West	12
Wisconsin Heights	1
Total	128

CASA of Dane & Columbia Counties

The Court Appointed Special Advocates (“CASA”) program of Dane & Columbia Counties operates as part of the Canopy Center. CASA of Dane & Columbia Counties follows the National Court Appointed Special Advocate Association model of programming, which focuses on best interest advocacy for children. Since June of 2022 both Dane & Columbia counties are served by our single program.

CASA trains and supports community volunteer advocates who are assigned by juvenile division judges to children in the Dane County Juvenile Court system. CASA volunteers visit their assigned child/children on a weekly basis, correspond with service providers and adults in their assigned child’s/children’s life, provide informative reporting to the courts, and advocate for the safety, permanency, and well-being of their assigned child/children.

CASA volunteers also provide to their assigned children advocacy for enrichment opportunities and educational services, and teen life skills mentorship as appropriate. CASA of Dane & Columbia Counties serves the Dane County courts pursuant to Wis. Stat. § 48.236, the “Court Appointed Special Advocate” provision of the Wisconsin Statutes, and pursuant to its Memorandum of Understanding with the Dane County Juvenile Courts.

Number of kids served by the CASA of Dane & Columbia Counties Program in 2025: 117

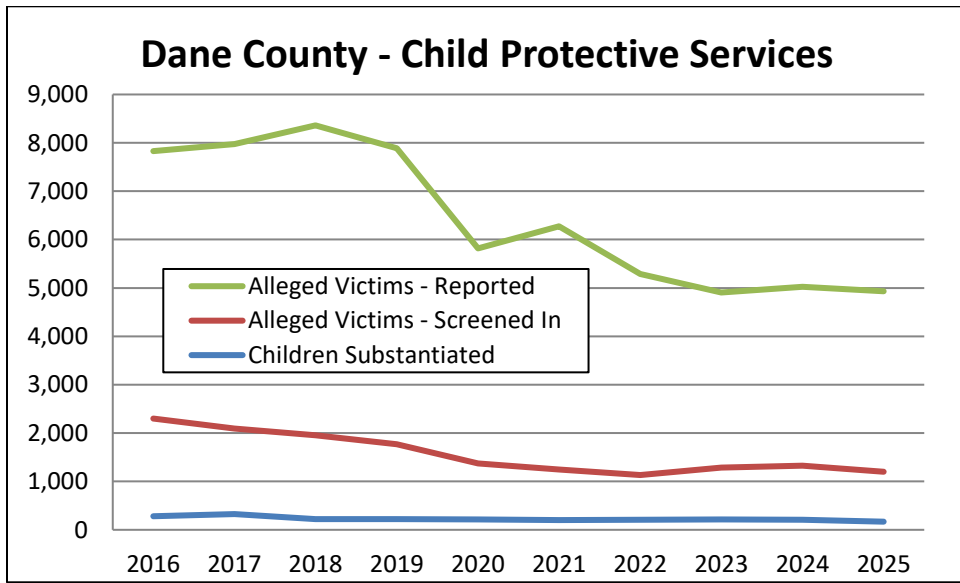
- Dane County children served: 68
- Ages of kids served in Dane County:
 - 0-2: 2
 - 2-4: 7
 - 5-14: 42
 - 15-18+: 17
- CASA Volunteer hours spent in 2025: 1350
- Placement of kids in Dane County served by the CASA program in 2025 (where kids spent a majority of the year):
 - Biological home: 19
 - Kinship placement: 17
 - Foster care: 25
 - Residential placement: 3
 - Other: 4
- Number of children involved in different types of cases served by the Dane County CASA program in 2025 (if more than one applies, both counted):
 - CHIPS: 57
 - Youth Justice/JIPS: 11

Child Protective Services

Allegations of abuse or neglect of children in Dane County are referred to the Dane County Department of Human Services' Child Protective Services (CPS) and are named Access Reports. CPS Access staff screen allegations based on statutory thresholds and WI State standards. Access Reports that are screened out do not receive additional follow-up. Access Reports that are screened in are forwarded for an Initial Assessment (IA). The IA is a comprehensive assessment of individual and family conditions, functioning, and dynamics in response to a report of alleged child maltreatment. If the IA determines that the allegations did indeed occur, the allegations are substantiated.

CPS Data Point	2016	2017	2018	2019	2020	2021	2022	2023	2024	2025
Alleged Victims Reported	7,832	7,974	8,361	7,886	5,815	6,272	5,286	4,906	5,021	4,934
Alleged Victims Screened-In	2,300	2,090	1,955	1,768	1,371	1,249	1,132	1,288	1,327	1,198
Substantiated Victims	280	325	218	218	216	202	210	216	208	168

Source: Wisconsin's Statewide Automated Child Welfare Information System (eWiSACWIS) Replication Data



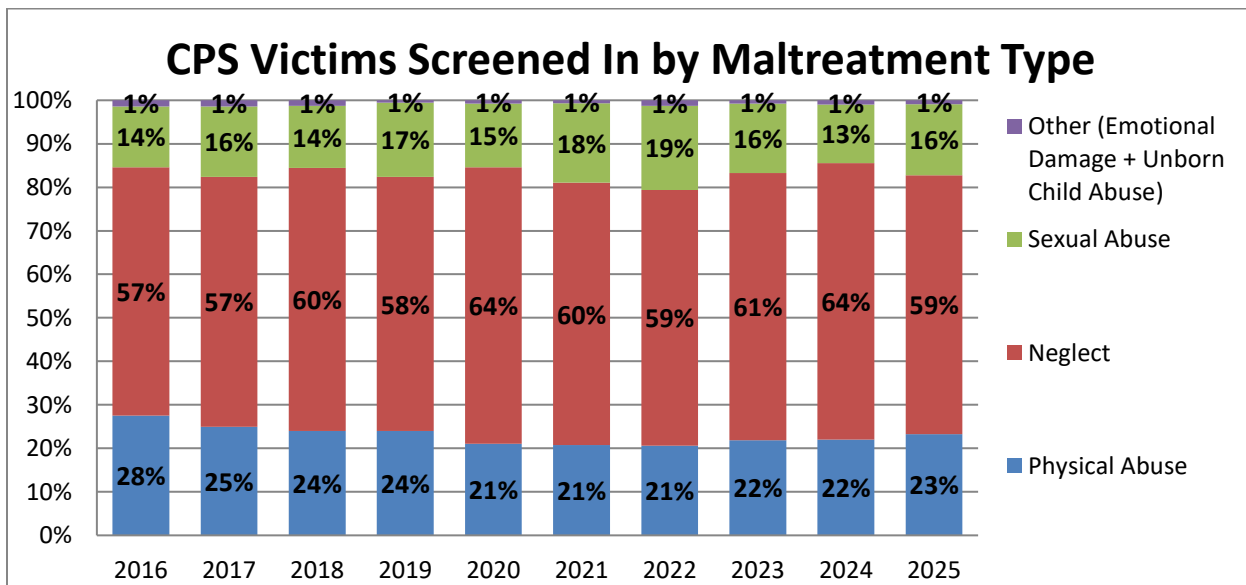
The number of alleged victims reported to CPS stayed around 8,000 from 2013 to 2019 before decreasing dramatically in 2020 due to Covid effects. With schools, clinics and other social service agencies opening up in 2021 the number of alleged victims reported increased 8% from 2020 to 2021, but decreased to around 5,000 from 2022-2025. The number of alleged victims screened-in decreased from 2015 through 2022, but increased in 2023-2024 before decreasing in 2025. The number of youth who were substantiated has decreased from the high 200's to 300's from 2015-2017 to low 200's from 2018-2024 and even lower in 2025.

The table below shows the frequency of the given alleged maltreatment types of the youth that are screened-in. The same youth may be the alleged victim of more than one maltreatment type per access report.

Screened-In Alleged Victims by Maltreatment Type	2016	2017	2018	2019	2020	2021	2022	2023	2024	2025
Physical Abuse	720	586	520	468	316	289	262	315	330	317
Neglect	1,494	1,348	1,307	1,141	952	840	748	884	952	810
Sexual Abuse	365	380	309	332	220	254	246	230	201	223
Other*	37	33	28	11	11	10	16	11	15	12
Total	2,616	2,347	2,164	1,952	1,499	1,393	1,272	1,440	1,498	1,362

*Other is the sum of Emotional Damage and Unborn Child Abuse maltreatment types

The chart below shows the data above as a percentage of the total. For example, in 2025, there were 810 alleged victims of neglect out of 1,362 total allegations or 59%. The percent of Sexual Abuse has grown while Other (Emotional Damage and Unborn Child Abuse) have stayed steady over time, but decreased in 2023 and 2024. The percent of Physical Abuse has decreased slightly from 28% in 2016 to 23% in 2025 while Neglect been stable around 60%.



The four tables on the next page go through the CPS system by Race and Ethnicity from the universe of those who could be abused/neglected (population age 0-17), referred on Access Reports, Screened-in, and finally those that were substantiated of abuse/neglect.

Dane County Population Age 0-17 by Race and Ethnicity										
Race / Ethnicity	2016	2017	2018	2019	2020	2021	2022	2023	2024	2025
White	78,853	78,652	78,432	78,465	78,397	77,239	76,186	75,649	74,891	74,891
Black	11,704	11,954	11,973	11,972	11,966	12,080	12,352	12,608	12,897	12,897
Native American	413	389	399	404	392	380	368	365	369	369
Asian	8,015	8,313	8,348	8,418	8,410	8,322	8,524	8,552	8,653	8,653
Hispanic	13,943	14,303	14,694	14,897	15,131	14,992	14,926	15,044	15,157	15,157
Total	112,928	113,611	113,846	114,156	114,296	113,013	112,356	112,218	111,967	111,967

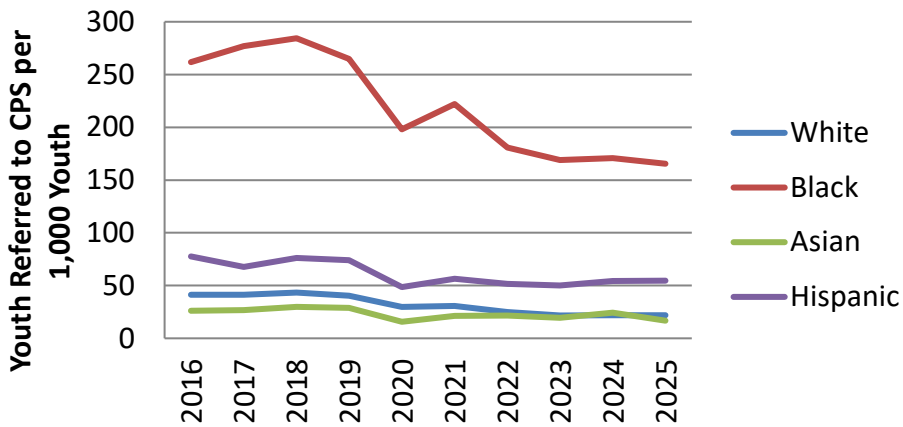
Unique Youth per Access Report Referred to CPS by Race										
Race / Ethnicity	2016	2017	2018	2019	2020	2021	2022	2023	2024	2025
White	3,247	3,258	3,402	3,163	2,343	2,367	1,905	1,638	1,632	1,639
Black	3,062	3,311	3,405	3,170	2,371	2,683	2,234	2,129	2,201	2,134
Native American	134	121	116	149	131	108	82	103	74	72
Asian	209	222	249	243	132	177	183	166	210	145
Hispanic	1,082	967	1,120	1,104	735	846	768	755	824	826
Unknown	98	95	69	57	103	91	114	115	80	118
Total	7,832	7,974	8,361	7,886	5,815	6,272	5,286	4,906	5,021	4,934

CPS Reports Screened In by Race										
Race / Ethnicity	2016	2017	2018	2019	2020	2021	2022	2023	2024	2025
White	795	738	666	589	429	379	313	354	341	342
Black	1,060	989	871	845	672	622	575	625	659	553
Native American	49	42	35	32	38	28	21	35	19	21
Asian	82	48	61	59	25	36	38	47	51	37
Hispanic	311	269	320	242	206	182	183	224	254	238
Unknown	3	4	2	1	1	2	2	3	3	7
Total	2,300	2,090	1,955	1,768	1,371	1,249	1,132	1,288	1,327	1,198

Substantiated Screen-In's by Race										
Race / Ethnicity	2016	2017	2018	2019	2020	2021	2022	2023	2024	2025
White	105	116	80	86	68	70	50	53	58	57
Black	120	150	89	85	97	86	99	108	87	72
Native American	6	7	5	6	5	5	2	2	6	2
Asian	7	5	1	6	2	6	10	11	4	5
Hispanic	42	47	43	35	44	35	49	42	53	32
Unknown	0	0	0	0	0	0	0	0	0	0
Total	280	325	218	218	216	202	210	216	208	168

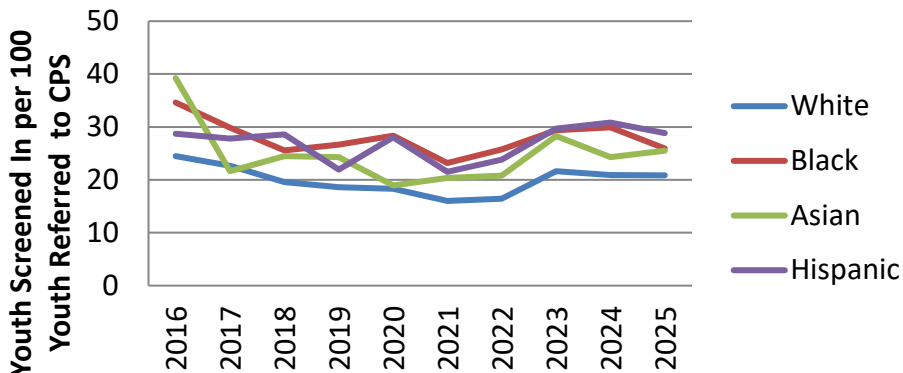
The tables on the previous page are used to compare rates of referral, screen-in, and substantiation by Race and Ethnicity.

Youth Referred to CPS per 1,000 by Race



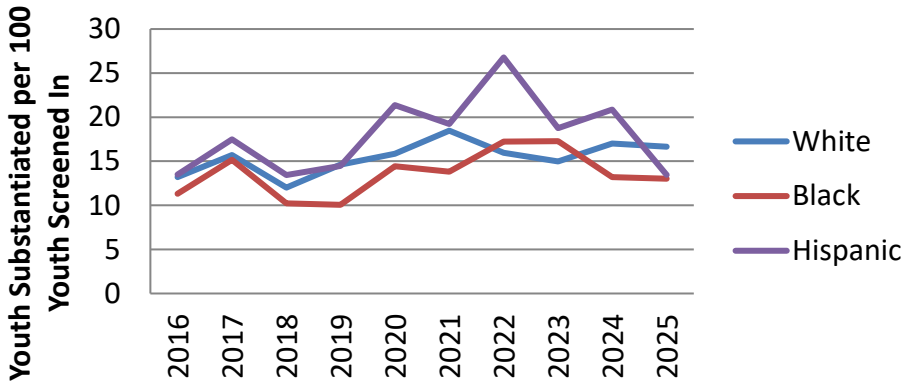
The rate of Referral to CPS for Black Youth decreased from 262 to 165 per 1,000 while the rate for White Youth decreased from 41 to 22 per 1,000 from 2016 to 2025. In 2025, the referral rate of Black Youth to CPS was 7.6 times higher than that of White Youth (165.46 / 21.89) and 2.5 for Hispanic/Latino youth (54.50/21.89).

Youth Screened In per 100 Youth Referred by Race



Screen-in Rates decreased linearly overall for most Racial/Ethnic groups from 2010 to 2021, but stabilized from 2022-2025. However, White youth were almost always screened in at lower rates than Youth of Color. In 2025, the Screen-In Rate for Black and Hispanic/Latino youth was 24% and 38% higher, respectively, than White youth.

Youth Substantiated per 100 Youth Screened In by Race



White and Black Youth had similar Substantiation rates across time. Hispanic Youth are typically substantiated at slightly higher rates than White Youth. Asian Youth have been removed from this chart because of the small number substantiated and the highly volatile results.

Juvenile Court Referrals

Referrals to the Juvenile Court by Law Enforcement are filed with the District Attorney’s office and the Department of Human Services and are then screened and assessed by the Department of Human Services. After the assessment is complete, Human Services sends a recommendation to the District Attorney’s office as to whether or not to go forward with a formal delinquency petition, a deferred prosecution agreement, counsel and release and/or to use the information in case planning. There is an expedited process when a youth is taken into custody and is under a temporary physical custody order.

In some cases, referrals may contain several “counts” or charges for one individual, while in other situations there may be multiple referrals, each containing single allegations. In either case, the data provides a general picture of the number of referrals law enforcement make to the court for delinquency intake services.

In terms of the number of referrals compared to prior years, the following table illustrates the trend. Juvenile Court referrals had been on a decreasing trend since 2019.

JUVENILE COURT REFERRALS

Race	2016	2017	2018	2019	2020	2021	2022	2023	2024	2025	AVG
White	279	266	278	292	175	132	183	151	163	147	206
Black	460	594	714	727	519	412	344	327	294	306	470
Native American	3	0	0	4	8	4	1	2	4	1	2
Asian	4	14	13	13	8	5	15	8	9	8	10
Hispanic	58	50	56	91	54	51	74	59	54	40	59
Unknown	0	0	0	0	0	2	0	0	0	0	0
# of Referrals	804	924	1061	1127	764	606	617	547	524	502	747

Source: Dane County Human Services database

Juvenile Court Petitions filed

The following table lists the 15-year history of Juvenile Court Petitions filed with the Dane County Circuit Court. There was a 3% increase in formal delinquency petitions and a 37% decrease in CHIPS petitions in 2025 when compared to 2024.

2011-2025											
YEAR	DEL	WAIVER	CHIPS	TPR	JIPS	JI	JG	EXT/VAC CD	PPR/PPRH	OTHER	TOTAL
2011	770	12	232	124	35	45	212	13	476	1175	3094
2012	660	13	256	108	36	69	157	18	464	1058	2839
2013	610	16	238	111	28	27	173	15	471	1094	2783
2014	543	11	251	105	34	25	199	17	540	1125	2850
2015	482	1	232	105	34	28	149	9	530	1076	2646
2016	464	4	176	86	44	42	197	14	473	1026	2526
2017	484	1	203	96	48	37	196	14	499	958	2536
2018	603	10	107	107	48	30	197	18	387	827	2334
2019	691	11	116	76	59	51	206	21	350	847	2428
2020	495	14	136	62	45	6	133	17	396	752	2056
2021	397	20	108	73	18	21	145	19	423	900	2124
2022	503	10	124	78	40	27	176	29	281	428	1696
2023	438	11	125	68	43	20	164	27	264	314	1474
2024	406	3	111	57	43	44	187	43	259	373	1526
2025	420	0	70	56	35	22	176	40	267	386	1397
AVG	531	9	166	87	39	33	178	21	405	822	2287
"OTHER" includes all Ext/Rev &/or Change of Placement.											

DEL = Delinquency WAIVER = Waiver to adult court CHIPS = Child In Need of Protection or Services
 TPR = Termination of Parental Rights JI = Juvenile Injunction JG = Juvenile Guardianship
 EXT/VAC CD = Extend/Vacate Consent Decree PPR/PPRH = Permanency Plan Review/Hearing
 Source: Dane County Clerk of Courts/CCAP

Closing

The Juvenile Court Program looks forward to continuing to serve the people of Dane County and we are working hard to stay in tune with the changing needs of our diverse community.

Continuing in 2026, the entire Dane County Juvenile Court Program (JRC, SH, Detention, and HDP) kept a database that was used to collect and tabulate data. Data on youth in Detention was also collected in the State's Juvenile Secure Detention Registry within eWiSACWIS. With this more accurate and efficient method of dealing with statistics, the ability to deliver information about the trends and patterns affecting the youth of Dane County is greatly enhanced.

"Thank You" to all of the agencies who contributed to this report. Questions, comments, or suggestions regarding this report, and/or the Juvenile Court Program generally, would be welcome and should be directed towards any of the persons listed below. Past reports can be found on the department's website at: <https://juvenilecourt.countyofdane.com/>

Ed Pearson

Juvenile Court Administrator
Phone: (608) 283-2926

Albert Watson

Juvenile Detention Center Superintendent
Phone: (608) 283-2929

Suzanne Stute

Community Program Manager
Phone: (608) 246-3277

Bert Schaetz

Annual Report Coordinator/JRC Counselor
Phone: (608) 266-4983